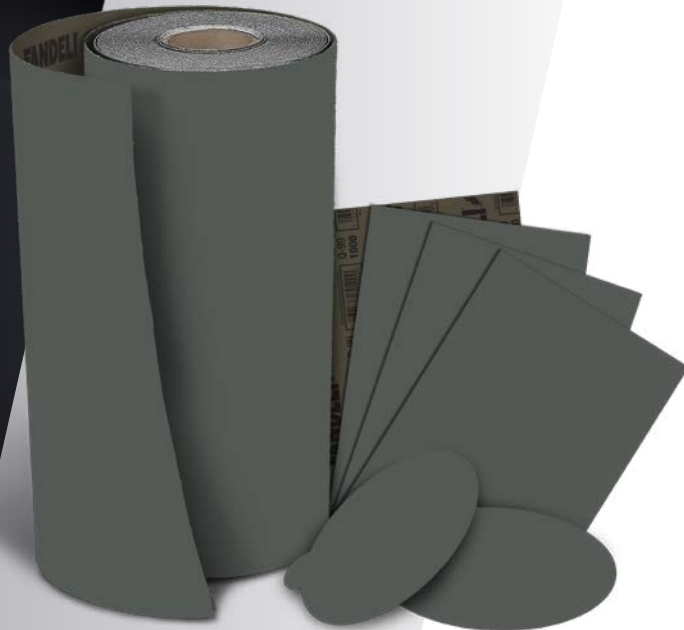


Q-99 Line

FEPA

This line developed with waterproof paper is ideal for sanding wet micro-finishes. Its use is appropriate in the automotive, metalworking, industrial maintenance, body shop and paint industries, for home projects and on a wide variety of materials. It is the most versatile and highest-quality sandpaper on the market.



GRADE AVAILABILITY

P800 P1000 P1200 P1500 P2000

EXTRA FINE / MICRO FINE
FINAL FINISHING / MICRO FINISHES

Backing Heavy-duty "A" and "C" weight paper with waterproof and anti-slip properties.

Mineral Silicon Carbide.

Grades FEPA: P800 to P2000.

Coating Closed.

Ideal



NONFERROUS
METAL



LACQUERS
AND PAINT



AUTOMOTIVE



PLASTIC



GLASS

Recommended



METAL

Shapes



ROLLS



SHEETS



CONTACT
DISCS



SPECIALTIES

Applications



MANUAL SANDING



ORBITAL
PNEUMATIC
SANDER



ORBITAL SANDER
WITH DISC
SUCTION



WET SANDING



HOOK



PSA ADHESIVE

Applications

- For finishing processes on high-quality surfaces.

Characteristics

- Its high resistance and sanding power facilitate operations that require high demand.
- Waterproof paper backing with non-slip properties allows dry and wet operations.
- Its closed structure ensures quick sanding and a long shelf life.
- Silicon Carbide achieves a unique finish in wet applications.

FANDELI®

www.fandeli.com.mx