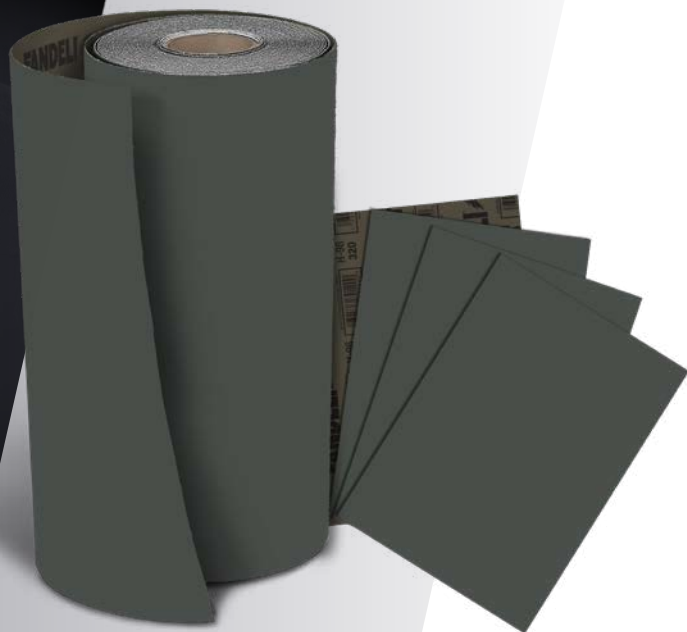


H-98 Line

FEPA

This line developed with waterproof paper is ideal for manual intermediate wet sanding. Its use is appropriate in the automotive, metalworking and industrial maintenance industries, and auto body and paint shops. Also ideal for the textile industry, for home projects and a wide variety of materials. It's the most versatile and highest-quality sandpaper on the market.



GRADE AVAILABILITY

P060 P080 P100 P120 P150 P180 P220 P240 P280 P320 P360 P400 P600 P800 P1000 P1200 P1500

MEDIUM / FINE / EXTRA FINE / MICRO FINE
HEAVY POLISHING / INTERMEDIATE FINISHING / FINAL FINISHING / MICRO FINISHING

Backing Heavy-duty "A" and "C" weight paper with waterproof and anti-slip properties.

Mineral Silicon Carbide.

Grades FEPA: P060 to P1500.

Coating Closed.

Ideal



NONFERROUS
METAL



LACQUERS
AND PAINT



AUTOMOTIVE



PLASTIC



GLASS

Recommended



METAL

Shapes



ROLLOS



SHEETS



SPECIALTIES

Applications



MANUAL SANDING



ORBITAL
PNEUMATIC
SANDER



ORBITAL SANDER
WITH DISC
SUCTION



HOOK



HOOK



PSA ADHESIVE

Applications

- Ideal for industrial processes and general use.
- Automotive Industry: wet and semi-wet sanding of e-coats, clear coats and primers, gel coats, polycarbonate headlights, plastics, resins and a great quantity of composite materials.

Characteristics

- Automotive Industry: wet and semi-wet sanding of e-coats, clear coats and primers, gel coats, polycarbonate headlights, plastics, resins and a great quantity of composite materials.
- Waterproof paper backing with non-slip properties allow dry and wet operations.
- Closed structure ensures quick sanding and a long shelf life.
- Silicon Carbide achieves a unique finish in wet applications.

FANDELI®

www.fandeli.com.mx